



**Schoolcraft**  
College®  
FOUNDATION

# FALL 2023 NEWSLETTER

## Dear Schoolcraft College Community,

As 2023 ends, I am pleased to share with you the achievements and impact of the Schoolcraft College Foundation in 2022-2023. Thanks to the generous support of our donors, alumni, faculty, staff, and friends, we have been able to provide scholarships and other program support to our students and the College.

In this newsletter, you will find some highlights of our financial performance, as well as stories of how your gifts have made a difference in the lives of our students and the community. You will also learn about some of the upcoming events and opportunities to get involved with the Foundation and the College.

Here are some of the key numbers that reflect the Foundation's success in 2022-2023:



We received **\$1,891,589** in gifts and contributions (including events), which does not include committed future planned gifts.



We earned **\$592,467** in investment income and realized and unrealized gains (including remainder trust/unitrust) of **\$1,275,996**.



Our portfolio of net assets grew to **\$18,961,454**, of which **\$15,643,845** were with donor restrictions and **\$2,925,314** were without donor restrictions.



We awarded **\$506,307** in scholarships to deserving students and provided **\$2,173,311** in other program support to enhance the quality of education and services at Schoolcraft College.



The College was awarded a **\$4.4 million grant** from the Ralph C. Wilson, Jr. Foundation and Ballmer Group as part of the Detroit Drives Degrees Community College Community (D3C3) collaborative.

These numbers are impressive, but they are not the only measure of our success. Behind every number is a story of a



**Dawn Magretta (right) with Geri Kilsdonk**

student who achieved their academic goals, a faculty member who enhanced their teaching skills, a program that improved its curriculum or facilities, or a community partner that benefited from our collaboration. These are the stories that inspire us to continue our mission of supporting Schoolcraft College and its students.

We are grateful for your continued trust and confidence in the Schoolcraft College Foundation. Your generosity is making a lasting impact on our college and our community. We hope you enjoy reading this newsletter and learning more about how your gifts are transforming lives.

Warmest regards,

**Dawn Dyer Magretta, CFRE**

**Executive Director Schoolcraft College Foundation**

# BY THE NUMBERS FISCAL YEAR END 2023

(July 1, 2022 – June 30, 2023)

## Foundation Revenue 2022-2023

(Audited)



Gifts & Contributions  
(including events)

**\$1,891,589\***

\*does not include committed future planned gifts

Investment Income

**\$592,467**



Realized & Unrealized (losses) gains,  
(including remainder trust/unitrust)

**\$1,275,996**

## Foundation Portfolio of Net Assets 2022-2023

Without Donor Restrictions

**\$2,925,314**

With Donor Restrictions

**\$15,643,845**



Total Net Assets

**\$18,961,454**

## Other Stats



Total Scholarships Awarded

**\$506,307**

Other Program Support

**\$2,173,311**

**6**

New Endowed  
Funds



**12**

New Named  
Funds

## Total Number of Funds

**140**

Restricted Funds

**163**

Endowed Funds



## DONOR SPOTLIGHT

# THE MAHESHWARI FAMILY

Education has been an integral part of the Maheshwari family for generations. Anna has been an English professor at Schoolcraft College since 1999, having learned the value of teaching from her mother, Dr. Saroj Bajaj. Dr. Bajaj instilled the importance of education and giving back to the community in her children from an early age. She is a retired dean of Hindi, the national language of India, at Osmania University in India. She is a social worker and runs a college for more than 1,000 underprivileged young ladies. She was honored with the National Citizens Award by Mother Theresa in 1993.

Neal Maheshwari started teaching math at Schoolcraft in 2002 while working at Ford Motor Company. Anna and Neal have had long and amazing relationships with their students at Schoolcraft College. In fact, both their children started coming to campus as young children through the Kids on Campus program. Both were dual-enrolled students and went on to medical school. Today, Neha is the Chief Cardiologist at the VA Hospital in Palo Alto, California. Raj just finished his Pediatric Anesthesiology Fellowship at Johns Hopkins and is now an attending physician at Advent Hospital in Tampa, Florida.

Besides giving so much in their faculty roles, Neal said, "We were determined to give back in our own small way to the institution that has been

such a big part of our family." In August, they started the Maheshwari Family Endowed Fund to support education through the departments of English and Mathematics. Each year, the Fund will provide one Global Citizenship Award and one Math Award coordinated through the departments of English and Mathematics.

The Maheshwari Family Endowed Fund will live in perpetuity and only a portion of the interest will be used based on the Foundation's Investment and Spending Policy. The remaining interest will go back into the Fund, thus allowing it to continue to grow for the future.

Thank you to Anna and Neal for creating a legacy gift that will help students for generations to come!



# D3C3 UPDATE



Schoolcraft College is part of the Detroit Drives Degrees Community College Collaborative (D3C3), a partnership with six other community colleges and two foundations that aims to improve student success, K-12 alignment, and employer-led mobility strategy. The College received \$4.4 million over three years from the initiative and underwent an assessment by the National Institute of Student Success (NISS) to get a playbook of recommendations. The grant gives the College the chance to transform its operations.

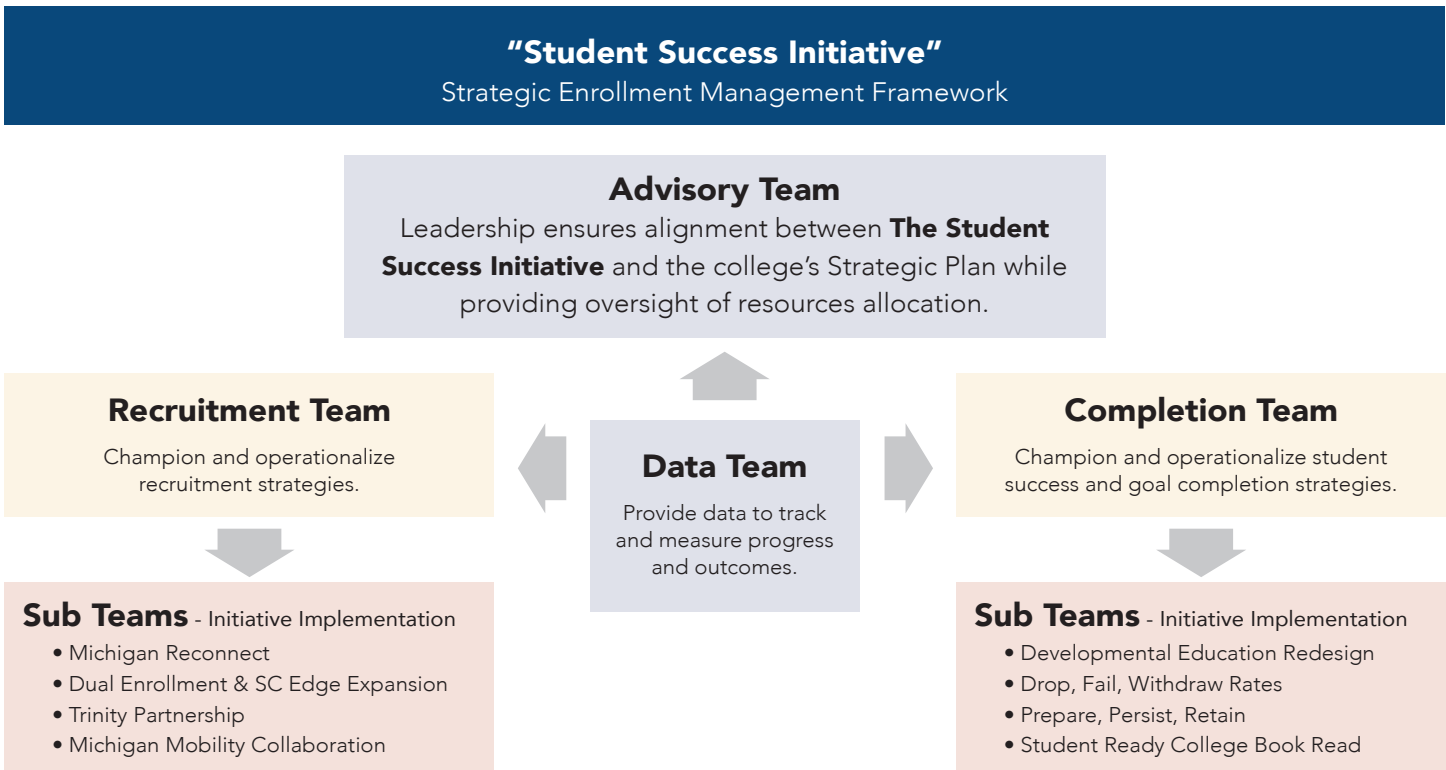
## D3C3 STUDENT SUCCESS UPDATE: TRANSFORMING THE STUDENT EXPERIENCE

Under the leadership of Chief Student Enrollment Officer Melissa Schultz, the College developed and implemented a **Strategic Enrollment Management (SEM) structure**, including appointing faculty and staff across campus. Here is the progress to date:

The SEM Recruitment and Completion Teams purpose is to:

- Make recommendations to the SEM-Group Advisory Team
- Co-create strategies and tactics to support recruitment and completion goals
- Mobilize associated action plans that are data informed and supported
- Sustain the fiscal health of the College

Additionally, an SEM Data Team was formed to lead environmental scanning, student enrollment behavior research, enrollment models, identify data needs, and provide data to advisory teams as needed.



# D3C3 SC BEWELL: SUPPORTING STUDENT'S MENTAL HEALTH

Across the D3C3 collaborative, mental health was identified as a barrier to student persistence and completion. At Schoolcraft, post-COVID, we saw an increase in suicide ideation and other mental health issues that really impacted students' educational pathways to succeed.

Led by Chief Student Success Officer Laurie Kattuah-Snyder, SC BeWell mental health care services for students launched in October. This includes:

- Wellness Hub – digital platform
- Student Engagement app including 12/7 clinical support
- Awareness Campaign
- Connect communication & reporting
- 24/7/365 coverage telephone line
- Self-guided Internet based Cognitive Behavioral training
- Treatment options include up to 5 visits per issue per student per year

"This opportunity will provide mental health support to all enrolled Schoolcraft college students," said Kattuah-Snyder. "We know that students who have mental health needs cannot progress in college. SC BeWell will give students the help they need – when they need it."

These are just two areas that are moving forward with innovative initiatives that truly will transform the student experience. Meanwhile, there is much work being done in the background such as identifying solutions to "pain points" in current processes across all departments including advising and financial aid which are priority areas of action from the NISS Playbook.

Look for more updates on Mobility and K-12 soon!

**For information, please contact the Student Relations office at 734.462.4486.**



# You can MAKE 2X THE DIFFERENCE

## WILL YOU HELP CHANGE SOMEONE'S LIFE TODAY?

That's what you do every time you support the Schoolcraft College Foundation. Your generosity helps hundreds of students pursue their dreams and achieve their goals.

In 2022-2023, we awarded over \$506,000 in scholarships to over 450 deserving students. That's an increase of 15% from the previous year! This amazing feat was possible thanks to donors like you.

But we're not done yet. We have an exciting opportunity for you to double your impact this year.

***The Wilkie Family has generously offered to match every dollar we raise up to \$100,000 by Dec. 31, 2023. This means that your gift will go twice as far in supporting our students.***

This is a critical time for our students. Community college students are often non-traditional students. Many of them face financial hardships, academic challenges, and personal struggles. For some, it's a choice of going to

class or putting gas in their car. Others are faced with food insecurity and need assistance to overcome barriers to persistence.

They need your help more than ever.

Your donation will provide scholarships, emergency funds, tutoring services, mentoring programs, and other resources that will make a difference in their lives.

Will you join us in this challenge and make a gift today?

You can donate online at our website or by mail using the enclosed envelope. No matter how you choose to give, please know that we appreciate your support and thank you for your kindness.

You are changing lives with every gift you make.



[scf.schoolcraft.edu/give](https://scf.schoolcraft.edu/give)

## WAYS TO GIVE

Your donation can also benefit you in various ways, such as tax savings, income for life, or estate planning. Here are some of the ways you can give smartly and strategically to Schoolcraft College Foundation:

- **Planned giving.** You can designate a major gift to the Foundation in life or as part of your estate plan. The gift could include cash, real estate, life insurance, equity, or personal property. This way, you can create a lasting legacy for the College and its students, while also enjoying financial benefits. To learn more about planned giving options and benefits, please visit the Planned Giving page on the Foundation's website or contact the Foundation staff.
- **Cash giving.** You can make a cash donation on the Foundation's website. You can choose your gift amount, frequency, and designation. You can also dedicate your gift in honor or memory of someone. You can also make a cash donation by mail, online, or by phone.
- **IRA minimum distribution.** If you are 72 years old or older (73 if you reach age 72 after Dec. 31, 2023), you can avoid paying income tax on your required minimum distributions (RMDs) from your IRA by making a qualified charitable distribution (QCD) directly from your IRA to the Foundation. A QCD counts toward your RMD for the year, up to \$100,000, and reduces your taxable income. To make a QCD to the Foundation, please contact your IRA custodian and request a direct transfer of funds to the Foundation.
- **Blended giving.** Consider a combination of cash and planned giving to provide a more substantial gift that allows you to see your impact today and plan your legacy gift.

THANK YOU  
for your support!



## SCHOOLCRAFT COLLEGE CELEBRATES GRAND OPENING OF NEWLY-RENOVATED VISTATECH CENTER

The crown jewel of Schoolcraft College shown brightly September 21 as the ribbon was cut on the brand-new Vistatech Center expansion which was supported by a \$2 million grant from the SC Foundation.

The College recently celebrated the completion of the \$11 million renovation that took a little over a year to complete. The ribbon cutting marked the opening of the American Harvest restaurant, the Main Street Café and The Craft Grille, a brand-new, dedicated brewpub serving up a new menu and award-winning beer created by Brewing and Distillation Technology students.

"We're so proud of what the Vistatech Center has become with this new renovation," said Dr. Glenn Cerny, president of Schoolcraft College. "The new offerings will provide our students and the community with the best facilities in the region."

More than 150 people from across the college and community attended the grand opening to help celebrate the new facilities.

New spaces also include the Collaborative Learning

Studio, a one-of-a-kind offering with unlimited possibilities. Equipped with cameras and full demonstration kitchen capabilities, the Collaborative Learning Studio provides a unique classroom experience for students. It is also the perfect place to hold an event and be as creative as possible.

Also new is the prefunctionary space, now named "Town Square," which adds more space for events and gives off a sophisticated vibe.

The public is welcome to return to the Vistatech Center and enjoy its culinary offerings. The Main Street Café is open 9 a.m. to 4 p.m. Monday through Friday. The American Harvest is open for lunch select Wednesdays, Thursdays and Fridays, and is open for dinner on select Wednesdays and Thursdays, with reservations available on OpenTable. The Craft Grille is open from 11 a.m. to 9 p.m. Wednesday, Thursday and Sunday, as well as 11 a.m. to 10 p.m. Friday and Saturday.

More information, including how to book spaces, can be found at [schoolcraft.edu/vistatech](http://schoolcraft.edu/vistatech).





## SCHOOLCRAFT COLLEGE OPENS NEW CENTER TO SUPPORT STUDENT VETERANS

Schoolcraft College is proud to announce the opening of the Mark L. Whitfield Veteran & Military Services Center, a new space dedicated to serving student veterans, military members, and their families. The Center, located on the second floor of the McDowell Building, reopened on November 9th after several months of renovation and expansion.

The Center provides a range of services and resources to help student veterans, current military members, and their dependents succeed in their academic journey. The Center's staff can assist with enrollment, transcripts, Veterans Affairs benefits, scholarships, and more. The Center also offers the Masco Command Post, a lounge area where student veterans can relax, study, and connect with their peers.

The Center is named after Mark L. Whitfield, a U.S. Naval Academy graduate who served six years in active duty and retired as a Commander. Whitfield and his family were among the generous donors who made the new Center possible, along with the Mahoneys, Masco, the Fausones,



the Stroms, and many others from the Schoolcraft donor community.

Lauren Harman, a Navy veteran and a student at Schoolcraft College, expressed her gratitude for the Center and its staff. "They listened to my concerns and really understood me first as a person and then a student and directed me in choosing the right classes that fit my current financial situation as well as the needs of my degree," she said. "They guided me with resources that would benefit me as a veteran and made my time at Schoolcraft College less stressful."

The official Grand Opening of the Mark L. Whitfield Veteran & Military Services Center was held on November 9th, coinciding with the week of Veterans Day. The event celebrated the achievements and contributions of the student veterans and the donors who supported them.

Schoolcraft College is honored to serve those who have served our country and is committed to providing them with a transformational educational experience.

# CulEx 2024 KICKS OFF



The CulEx Sponsor Preview was really well attended and \$40k in sponsorships are already secured! Chef Heather Moore provided a wonderful demonstration in the new Collaborative Learning Studio where guests were able to taste Pumpkin Crème Brule. This was followed by dinner in American Harvest where students prepared and served

a fabulous buffet. Another feature of the new CulEx is the addition of a "Chef's Circle" where some of our alumni chefs are getting involved for our 2024 signature event. Mark your calendars for October 24, 2024 as the next Culinary Extravaganza takes over the culinary kitchens and space for an evening to remember.

## STUDENT SURPRISE!

National Food Group, headquartered in Novi, MI, presented Culinary Certificate student Aryana Martinez with a scholarship to cover her certificate's cost, including tuition and required supplies. Aryana is the second recipient of this award, intended to give students with needs a solid start in the food industry. The Foundation and Culinary Arts Program are grateful for NFG's partnership to boost student success!



**(L to R) Dr. Glenn Cerny, President of Schoolcraft College, Culinary student Aryana Martinez; Samantha Bourque, Director of Corporate Social Responsibility, National Food Group; Chef Brian Beland, Chair, Culinary Arts**



# ANGILERI QUALITY INSTITUTE

The Angileri Quality Symposium was held on Friday, November 3rd and attracted 80 guests including 10 students. This year, the Symposium focused on quality in the mobility sector with much discussion on EV's, autonomous vehicles, infrastructure, and the future of the mobility sector. It was a great opportunity for faculty, staff, and students to learn about trends and training needs from industry experts. It also provided a forum for faculty and students to share their insights on interacting with industry. A panel presentation by six Schoolcraft students who

attended the AIAG two-day quality conference, where they shared their experience and insights on quality in the mobility industry.

New this year was a pre-symposium Networking Workshop for students. Foundation board members Kimberly Keaton-Williams and Ram Ramanujam joined Schoolcraft student Liam Fahey in sharing tips and experiences on how to network and why it is important. Several students attended and really enjoyed the session.



## MADISON'S STORY OF PERSEVERANCE

Madison's life had been full of challenges and hardships. She was trafficked by her drug-addicted mother and her partner for years before ending up in foster care. She ended up living with a best friend whose father is a pastor and Madison learned so much about life, herself, her beliefs, and what she wanted out of life.


Madison started at a four-year college in Toronto but after a suicide attempt, she moved to Michigan with her father. Madison had to rebuild her life from scratch with the help of her amazing friends and family.

She chose Schoolcraft to pursue her dream of becoming a diagnostic medical sonographer. She wanted to help women who had been victims of

abuse and trauma like her. She wanted to make a difference in their health and well-being.

However, paying for school and living expenses had been a struggle for her. She worked full time, but she still had debts and bills to pay. Applying for student loans was terrifying for her. That's why a Foundation scholarship meant so much to her.

This scholarship was covering her fall semester tuition, which was a huge relief for her. She could now focus on buying the books and resources she needed for school without worrying about skipping a bill. She could also save some money for her future plans, which include traveling and applying for medical school.



“Thank you so much for your generosity and support. You have made a positive impact on my life and education. I appreciate you and the Foundation more than words can say.”

The following gifts were given as a tribute between April 26, 2023 and October 4, 2023.

## IN MEMORY OF

---

**Kenneth Allen**

Millrace Weavers Guild

**Kenneth and Ruth Allen**

Sue and Roy Sather  
Millrace Weavers Guild

**Michael Bowen**

Anonymous

**Joseph Gabry (1918-2021) WWII Vet**

Anonymous

**Jeffrey Hash**

Cathy Broadbent

**Leo E Jankowsky**

Anonymous

**Dr. Conway Jeffress**

Sharon and Elton Braun  
Ginny McDonald

**Michael Krol**

Sue Ehlke

**Joseph D. Langell**

Laurie Kattuah-Snyder

**Pat McLane LaRue**

Jody and David Scheller

**Robert J. Leadley, Sr. and Dora K. Leadley**

Rob and Catherine Leadley

**Gordon G. Snyder**

Fran Snyder

**Stan Snyder (Korean Veteran)**

Laurie Kattuah-Snyder

**William Walter (Vietnam Veteran)**

Lori Timmis

**Kalvin D. Young**

KY2 Foundation  
Alma Walker  
Darryl and Nolan Walker

## IN HONOR OF

---

**Scott Durant**

Anonymous

**Robert (Bob) Feyers**

Katie Hurley  
Dillon Ramanauskas

**Sid Fox**

Dawn D. Magretta

**Brenda Levens**

Dawn D. Magretta

**Claudette Lowe**

Dawn D. Magretta

**Aria Matthews**

Anonymous

**Veterans Levos & McSweeney**

Jerry and Wendy Piasentin

**James Lewis & Other Veteran Math Students**

Katherine Jankoviak Anderson and  
Dyche Anderson

**Richard (Rick) Osgood**

Dillon Ramanauskas

**Mr. Sankaran**

Anonymous  
Ram and Lakshmi Ramanujam  
Viji Velayutham

**Ione Skaggs**

Dawn D. Magretta

**JoAnne Stadnicar**

Anonymous  
Career Services, Student Relations &  
Hinkle Student Resource Center  
Claudette Lowe  
Dawn D. Magretta  
Thom Moore  
Pam Strzempka

**Aaron Willis**

Chelsea Willis

## LAUREN'S STORY

Meet Lauren Harman, a Navy veteran who embarked on a transformative journey at Schoolcraft College, thanks to the Veterans Resource Center. After serving her country with distinction, Lauren faced a new challenge: returning to college after eight years. The transition was daunting, but the Veterans Center, under the guidance of Director Brent Landau, provided the support she needed.

Landau didn't just see Lauren as another student; he saw her as a person with unique experiences and aspirations. He listened to her concerns, understood her financial situation, and helped her choose classes that aligned with her degree goals. The resources provided by the Center eased her stress and made her academic journey at Schoolcraft College a rewarding experience.

Lauren's story is not just about her own success. It's a testament to the power of the Whitfield Veterans & Military Center and the impact it can have on the lives of veterans transitioning to academic life. Her story is a compelling reminder of why your generous donations matter. Your support helps veterans like Lauren navigate their academic journey and achieve their dreams.

Today, Lauren is a senior at the University of Detroit-Mercy, studying social work. She plans to attend graduate school and specialize in hospice care, crisis



**Lauren Harman attended Schoolcraft College after spending time in the Navy.**

intervention, and trauma-informed care. She also aims to become certified in suicide prevention to teach others.

Lauren's story is a powerful example of the potential that lies within our veterans. With the right support and resources, they can achieve their academic and career goals. Your continued support can make a difference in the lives of many more veterans at Schoolcraft College. Thank you for your generosity.

For information, please email [Foundation@schoolcraft.edu](mailto:Foundation@schoolcraft.edu) or call 734.462.4455

# SAVE THE DATES:

January 26, 2024  
**Economic Forecast  
with Dr. Cedric Howie**  
8 a.m. – 9:30 a.m.

---

February 29, 2024  
**Presidential Reception  
in Naples, Florida**  
4 p.m. – 6:30 p.m.

---

March 2024  
**Women in Philanthropy  
& Kick-off of Women's  
Giving Circle**

---

August 16, 2024  
**Alumni & Friends:  
Tigers vs Yankees**  
7 p.m. at Comerica Park

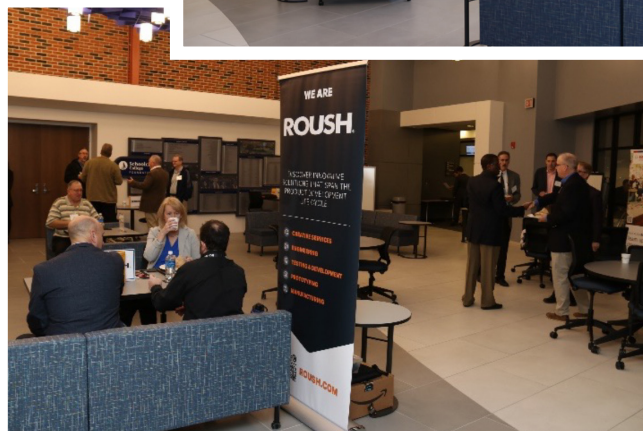
---

October 24, 2024  
**CulEx 2024**  
5 p.m. – 8 p.m.  
at Vistatech Center

Sponsorships available now.  
Ticket sales start  
February 1, 2024!



<https://bit.ly/24culex>



## SCHOOLCRAFT COLLEGE BOARD OF GOVERNORS

### Officers

Lynn Coburn, *President*  
Marina L. Shoemaker, *Vice President*  
James Fausone, *Treasurer*  
Stuart Baker, *Secretary*  
Lois McEntyre, *Past President*

### Members

Melanie Duquesnel  
David Groth  
Jeff Hamilton  
Kim Keaton-Williams  
Kelli Lewton  
Helen McGrath  
Dan Paulson  
Ram Ramanujam

Clyde Rivard  
Alec Thomson  
John Walsh  
Robin Whitfield

### Emeritus Members

Gary Gabel  
Thomas Marek  
Charles McIlhargey  
John N. Santeiu, Jr.

### Ex-Officio

Brian Broderick  
Glenn Cerny  
Dawn Magretta

## SCHOOLCRAFT COLLEGE BOARD OF TRUSTEES

Carol M. Strom, *Chair*  
Brett M. Gierak, *Vice Chair*  
Brian D. Broderick, *Secretary*  
Terry Gilligan, *Treasurer*

Dillon E. Breen, *Trustee*  
Angela Jaafar, *Trustee*  
Candy R. Little, *Trustee*

## VISION 2025 CAMPAIGN COMMITTEE

### Co-Chairs

Marina Shoemaker  
John Walsh

### Committee Members

Stuart Baker  
Lynn Coburn  
Jim Fausone  
Lois McEntyre  
Helen McGrath  
Clyde Rivard

### Vision 2025 Honorary Committee

Maureen Brosnan,  
Mayor of Livonia  
Chuck Dardas, Alpha USA  
Vince & Melodie DeLeonardis  
Brigadier General (Ret.)  
Carol Ann Fausone

Nolan Finley, The Detroit News  
David Fishman,  
Universal Properties  
Richard & Ann McDowell  
Robert Nix  
Arlene & Daniel O'Rourke  
Jay Sandhu, NYX, Inc.  
Brian Turnbull,  
Mayor of Northville  
Raphael (Ray) Washington,  
Wayne County Sheriff  
Patricia Watson  
& Charles Jerzycke  
William R. Wild, Midwest  
Independent Retailers  
Association  
Mark Whitfield



## VISION 2025

SCHOOLCRAFT COLLEGE FOUNDATION

**Vision 2025** is a five-year, \$18 million fundraising initiative that supports the College, its programs, students, and residents of the southeast Michigan community. It is designed to provide financial support needed for the College to move beyond what current funding provides. Vision 2025 will help engage, inspire, and transform workforce and education to meet the changing needs of the community, the economy, and students as well as impact the next 25 years of the 21st century.

You can help transform lives...

**Please contact the  
Schoolcraft College  
Foundation**

scf.schoolcraft.edu  
734.462.4455  
foundation@schoolcraft.edu  
Schoolcraft College  
Foundation is a 501(c)3  
organization.



**Schoolcraft  
College®**  
FOUNDATION